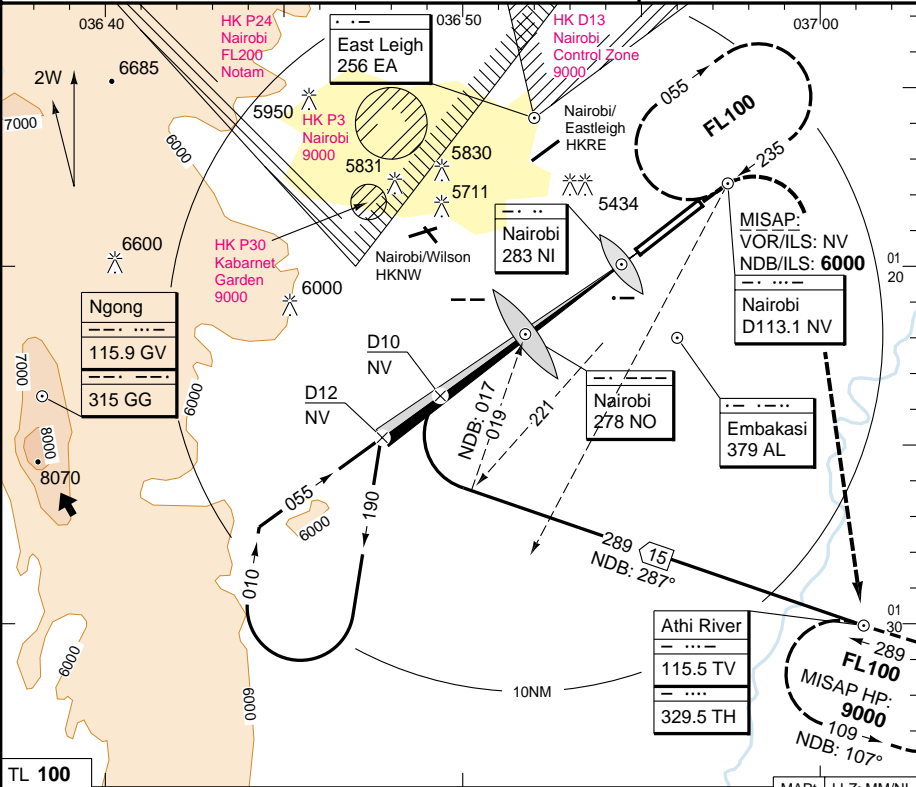


NEW PANS - OPS

[illegible]

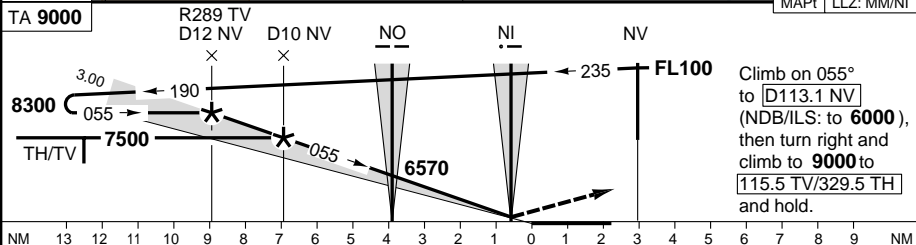
The diagram shows a PAPI 3.00L lighting system, which consists of four vertical light bars. Each bar has three lights. The LDG 4117x45/-0.4 is a low-intensity ground lighting system, which is a single light bar with four lights. The diagram shows the PAPI system and the LDG system side-by-side.

ILS/DME 110.3 NL --- 055° GP 3.00 GHT 50 U/S: WED 10-13



TL 100
TA 9000

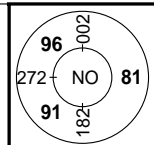
MAPt	LLZ: MM/NI
------	------------



NV	3.1°	ALT	GS/KT	ROD
D12	-	8300	90	500
D10	-	7640	100	550
D9	-	7320	120	660
D8	-	6990	140	770
D7	-	6660	160	880
D6	-	6330	RVR=Vis x:	
D5	-	6000	Day	1.0
D4	-	5680	Night	1.5
D3.7 :LLZ		5610		

JAA	ILS	LLZ+DME	
ACFT	C D	C	D
MIN	5530 (200)	5610 (253)	
RVR-KM	0.80	1.4	1.6
APL U/S	1.0	1.6	1.8

Copyright SAS Flight Support and Bertil Gullmar, Sweden. This document must not be resold, misused or incorporated into any freeware, shareware, payware, CD, publication or periodical without our permission. Please visit <http://www.dalnet.se/sasfs/> for further information.

THR ELEV **5327** FT/AD ELEV **5327** FT Change: ILS/DME, Proc, MT, Radial, Min

NOT FOR OPERATIONAL USE

© SAS Flight Support - SFS - 200 - Y - 2

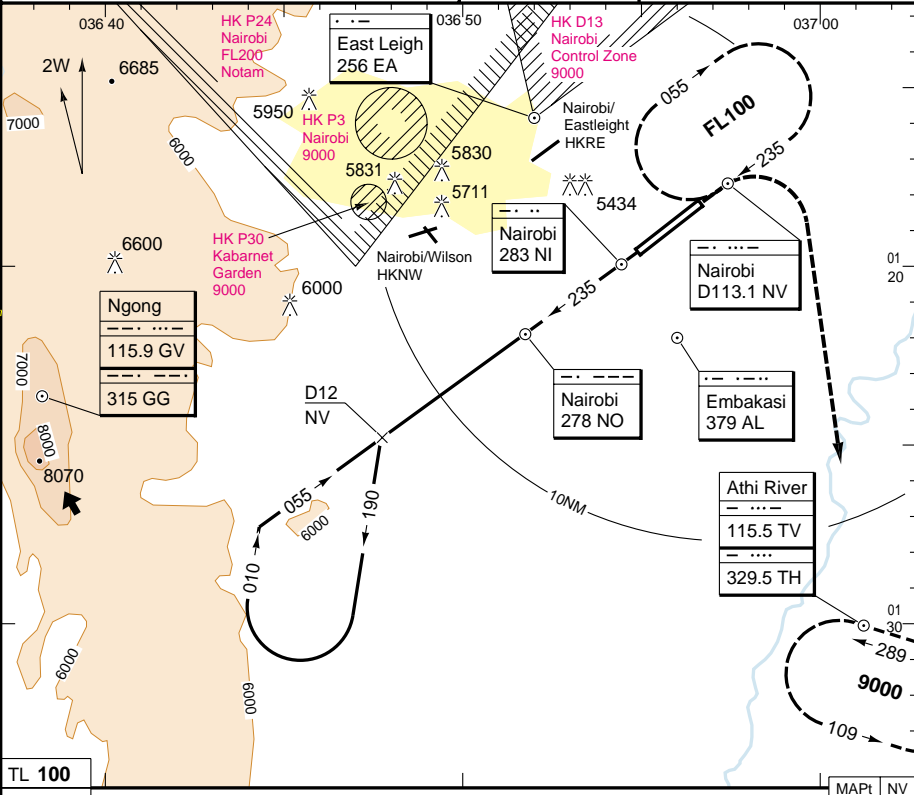
3

NEW PANS - OPS

N A I R O B I

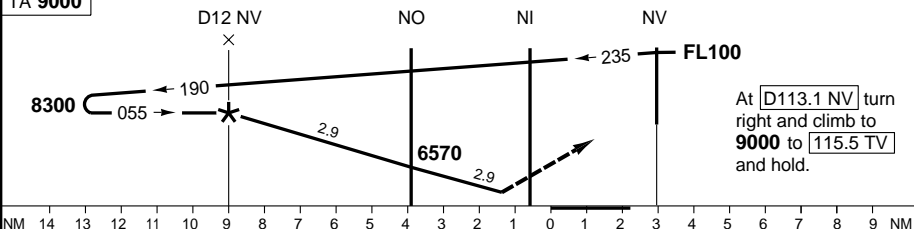
121.500 E Not AVBL

LDG 4117x45/-0.4

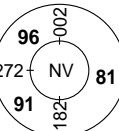


TL 100
TA 9000

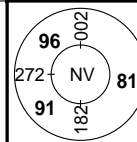
MAPt	NV
------	----



At **D113.1 NV** turn right and climb to **9000** to **115.5 TV** and hold.

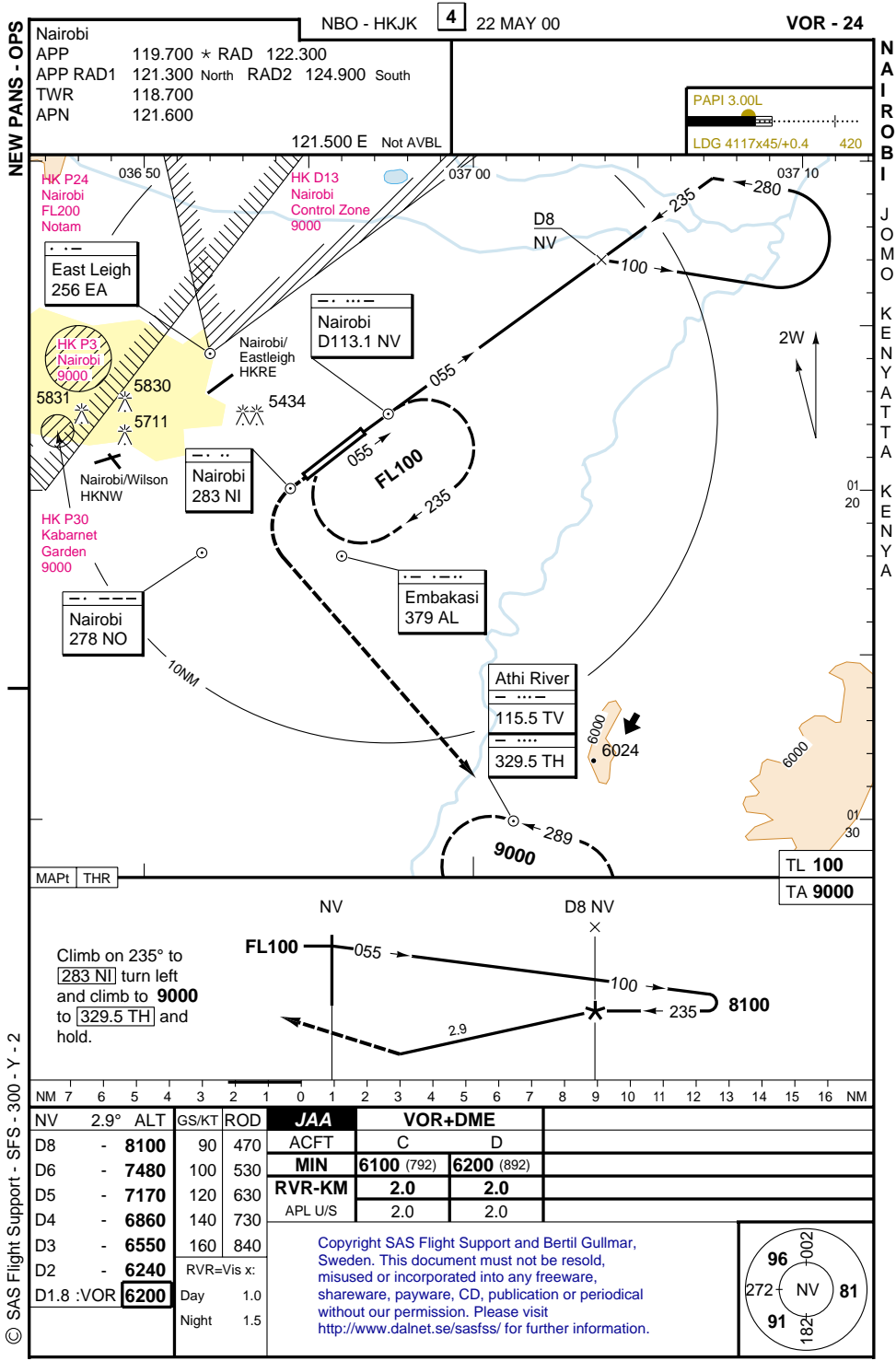
NV	3.1°	ALT	GS/KT	ROD	JAA	VOR+DME		
D12	-	8300	90	500	ACFT	C D		
D10	-	7640	100	550	MIN	5800 (443)		
D9	-	7320	120	660	RVR-KM	1.6	1.8	
D8	-	6990	140	770		APL U/S	1.8	2.0
D7	-	6660	160	880	Copyright SAS Flight Support and Bertil Gullmar, Sweden. This document must not be resold, misused or incorporated into any freeware, shareware, payware, CD, publication or periodical without our permission. Please visit http://www.dalnet.se/sasfss/ for further information.			
D6	-	6330	RVR=Vis x:					
D5	-	6000	Day	1.0				
D4.3 :VOR		5800	Night	1.5				

Copyright SAS Flight Support and Bertil Gullmar, Sweden. This document must not be resold, misused or incorporated into any freeware, shareware, payable, CD, publication or periodical without our permission. Please visit <http://www.dalnet.se/sasfss/> for further information.

THR ELEV **5327** FT/AD ELEV **5327** FT Change: MT, Min

NOT FOR OPERATIONAL USE

NOT FOR OPERATIONAL USE



© SAS Flight Support - SFS - 300 - Y - 2

